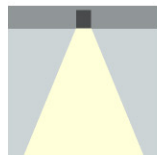
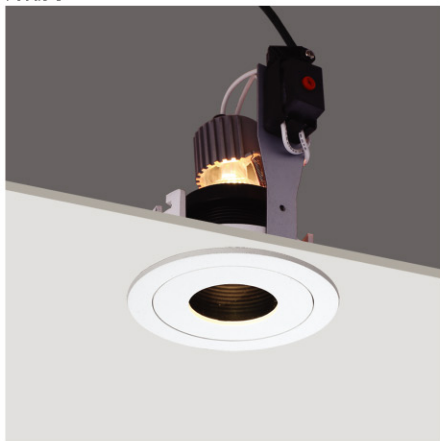


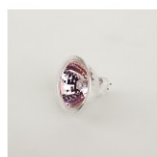
Focus-S



GW: 11.5Kg

CE IP20
 NW: 0.19Kg

 108
 ∅95
 +5 ~ 25mm
 P 83mm



QR-CB51 (PHILIPS)

R4B0037 AW

R4B0037 AS

R4B0037 WH

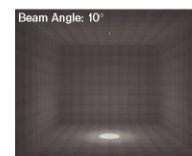
Max.50W / excl. Electronic Transformer / GU5.3 / AC12V

Max.50W / excl. Electronic Transformer / GU5.3 / AC12V

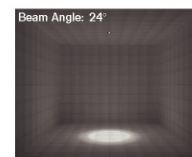
Max.50W / excl. Electronic Transformer / GU5.3 / AC12V



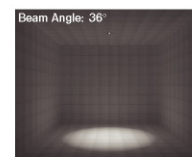
High	illuminance	Diameter
1m	13086 lx	0.17 m
2m	3272 lx	0.35 m
3m	1457 lx	0.52 m
4m	818 lx	0.70 m
5m	523 lx	0.87 m



High	illuminance	Diameter
1m	4389 lx	0.43 m
2m	1097 lx	0.85 m
3m	488 lx	1.23 m
4m	275 lx	1.55 m
5m	176 lx	1.89 m



High	illuminance	Diameter
1m	2199 lx	0.65 m
2m	550 lx	1.30 m
3m	244 lx	2.02 m
4m	137 lx	2.57 m
5m	88 lx	3.31 m



LED QR-CB51 (PHILIPS)

7W / 24° / 2700K / 1450cd / CRI: 80 / 40000hrs / GU5.3

7W / 36° / 2700K / 763cd / CRI: 80 / 40000hrs / GU5.3

7W / 60° / 2700K / 320cd / CRI: 80 / 40000hrs / GU5.3

7W / 24° / 3000K / 1550cd / CRI: 80 / 40000hrs / GU5.3

7W / 36° / 3000K / 810cd / CRI: 80 / 40000hrs / GU5.3

7W / 60° / 3000K / 341cd / CRI: 80 / 40000hrs / GU5.3

7W / 24° / 4000K / 1640cd / CRI: 80 / 40000hrs / GU5.3

7W / 36° / 4000K / 810cd / CRI: 80 / 40000hrs / GU5.3

7W / 60° / 4000K / 360cd / CRI: 80 / 40000hrs / GU5.3



High	illuminance	Diameter
1m	1531 lx	0.42 m
2m	383 lx	0.86 m
3m	170 lx	1.30 m
4m	96 lx	1.72 m
5m	61 lx	2.15 m

