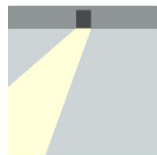
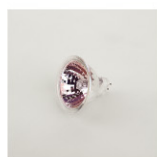


Focus-S



GW: 11.0Kg

CE IP20
 NW: 0.18Kg
 0° ~ 30° Tilt
 108
 ∅95
 ±5 ~ 25mm
 P 83mm



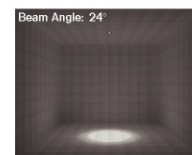
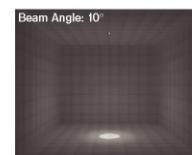
QR-CB51 (PHILIPS)

- R4B0040** AW
- R4B0040** AS
- R4B0040** WH

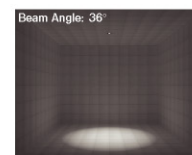
Max.50W / excl. Electronic Transformer / GU5.3 / AC12V
 Max.50W / excl. Electronic Transformer / GU5.3 / AC12V
 Max.50W / excl. Electronic Transformer / GU5.3 / AC12V



Height	1m	2m	3m	4m	5m	High	illuminance	Diameter
60°	13086 lx	3272 lx	1457 lx	818 lx	523 lx	18000cd	0.17 m	0.35 m
30°								



Height	1m	2m	3m	4m	5m	High	illuminance	Diameter
60°	4389 lx	1097 lx	488 lx	275 lx	176 lx	4000cd	0.43 m	0.85 m
30°								



Height	1m	2m	3m	4m	5m	High	illuminance	Diameter
60°	2199 lx	550 lx	244 lx	137 lx	88 lx	2200cd	0.65 m	1.30 m
30°								



LED QR-CB51 (PHILIPS)

7W / 24° / 2700K / 1450cd / CRI: 80 / 40000hrs / GU5.3
 7W / 36° / 2700K / 763cd / CRI: 80 / 40000hrs / GU5.3
 7W / 60° / 2700K / 320cd / CRI: 80 / 40000hrs / GU5.3

7W / 24° / 3000K / 1550cd / CRI: 80 / 40000hrs / GU5.3
 7W / 36° / 3000K / 810cd / CRI: 80 / 40000hrs / GU5.3
 7W / 60° / 3000K / 341cd / CRI: 80 / 40000hrs / GU5.3

7W / 24° / 4000K / 1640cd / CRI: 80 / 40000hrs / GU5.3
 7W / 36° / 4000K / 810cd / CRI: 80 / 40000hrs / GU5.3
 7W / 60° / 4000K / 360cd / CRI: 80 / 40000hrs / GU5.3



Height	1m	2m	3m	4m	5m	High	illuminance	Diameter
60°	1531 lx	383 lx	170 lx	96 lx	61 lx	1550cd	0.42 m	0.86 m
30°								

