



EXTERIOR CEILING SURFACE



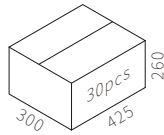
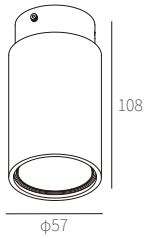
C4A0005

Max.50W
GU10
AC 220~240V 50/60Hz



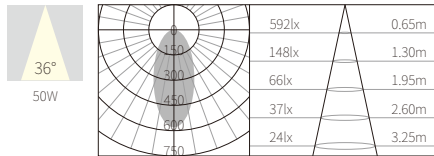
QPAR16(PHILIPS)

FIXED



NW:0.72kg

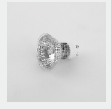
GW:23.8kg



ACCESSORIES

REQUIREMENTS

QPARR16
(PHILIPS)



LEDQPAR16
(PHILIPS)



REQUIREMENTS



COLOR TEMPERATURE FINISH

- 2700K ●
- 3000K ●
- 4000K ●
- 5000K ○
- 6500K ●

- Texture White(AW)
- Texture Silver(AS)
- Texture Black(OJ)